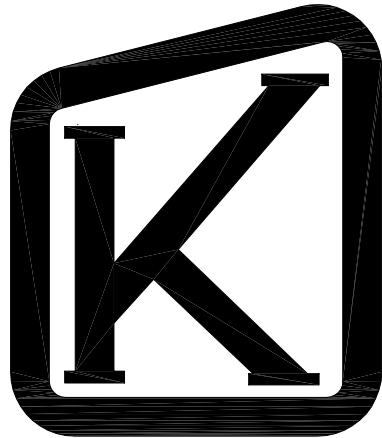
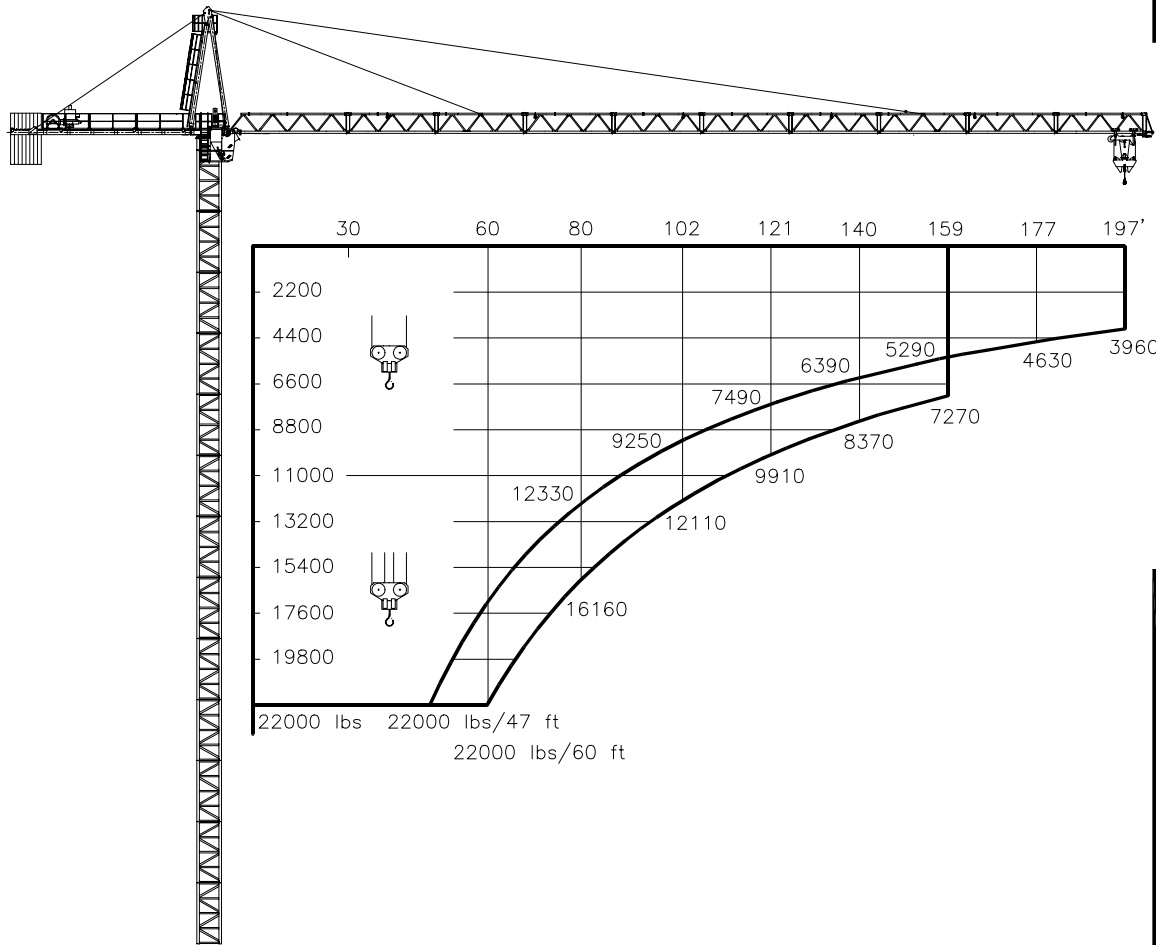


TECHNICAL
DATA

K-160



Mast sections
M16.1 / M16.2

KRØLL CRANES A/S

Nordkranvej 2 · DK-3540 Lyngby · Denmark · Phone: +45 48 187400 · Fax: +45 48 188807

E-mail: krollcranes@krollcranes.dk · www.krollcranes.com

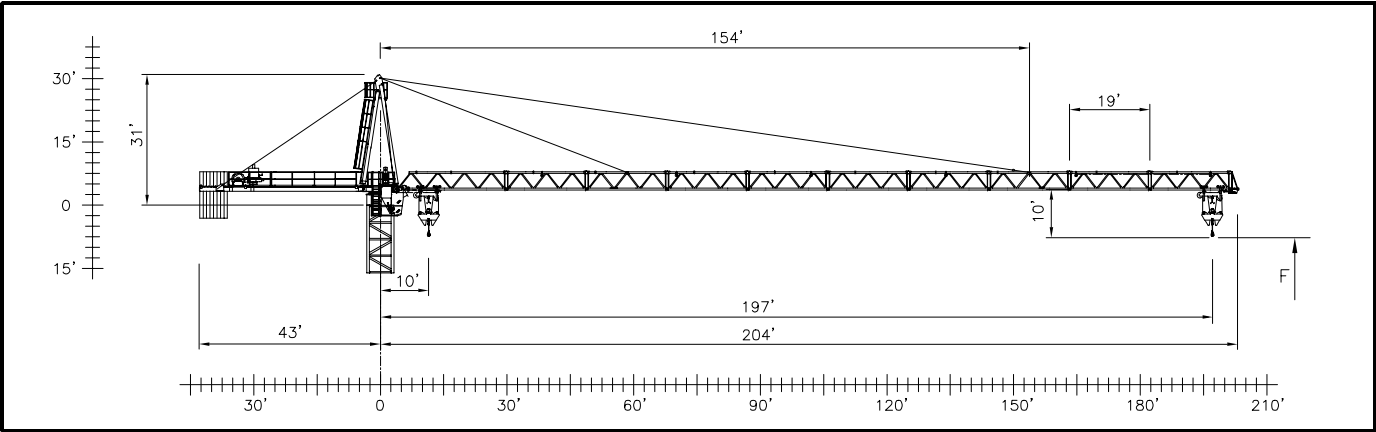
	3 x 480 V	CONTROL VOLTAGE / STEUER SPANNUNG
	60 Hz	
		24 VDC - 220 VAC

	HOIST WINCH/HUBWERK	44 kW	66 kW
	POWER CONSUMPTION/STROMVERBRAUCH	80 kVA	110 kVA
	FUSE / SICHERUNG	80 Amps	125 Amps
	POWER CABLE	4 x 2 AWG	4 x 1/0 AWG
	HAUPTKABEL	4 x 1/0 AWG	4 x 2/0 AWG
		4 x 2/0 AWG	4 x 3/0 AWG
	0 - 3300 lbs	0 - 400 ft/min	0 - 580 ft/min
	3300 - 5750 lbs	0 - 260 ft/min	0 - 400 ft/min
	5750 - 11000 lbs	0 - 150 ft/min	0 - 230 ft/min
	0 - 6600 lbs	0 - 200 ft/min	0 - 290 ft/min
	6600 - 11500 lbs	0 - 130 ft/min	0 - 200 ft/min
	11500 - 22000 lbs	0 - 75 ft/min	0 - 115 ft/min

	2 x 5 kW	MAX JIB MAX AUSLEGER	0 - 0.7 RPM
	7.1 kW	22000 lbs	0 - 230 ft/min
	4 kW units amounts depends on erection height	F _{max}	80 ft/min

HOIST ROPE	ø15 mm	FILL FACTOR 0.65	1770 MPa	BREAKING STRESS
HUB-SEIL	44/66 kW HOIST WINCH			BRUCHSPANNUNG
	1650 ft			
	>1650 ft *			
TROLLEY ROPE	ø8 mm			
LAUFKATZE-SEIL				

* CONSULT KRØLL CRANES A/S - NEHMEN SIE MIT KRØLL CRANES A/S KONTAKT AUF



APPROX. ERECTION WEIGHTS
UNGEFÄHRE MONTAGEGEWICHTE

The diagram illustrates the assembly of a crane. The main structure consists of a vertical tower (1) with a masthead (2) and a cabin (3). A rear jib (4) is attached to the masthead, and a hoist winch (5) is mounted on the jib. The tower is supported by a base (9-10). The base is composed of four base pads (11-12-13) and four CT16 (14). The tower is also supported by a base (9-10). The base is composed of four base pads (11-12-13) and four CT16 (14). The tower is also supported by a base (9-10). The base is composed of four base pads (11-12-13) and four CT16 (14).

ft	lbs
197	22470
177	21370
159	20260
140	19160
121	18060
102	16960

POS	ITEM	lbs
1	TOP TOWER	4790
2	MASTHEAD	8420
3	CABIN	4410
4	REAR JIB	10280
5	HOIST WINCH	4130
6	M16	3700
7	M016	3880
8	M16-2	8850

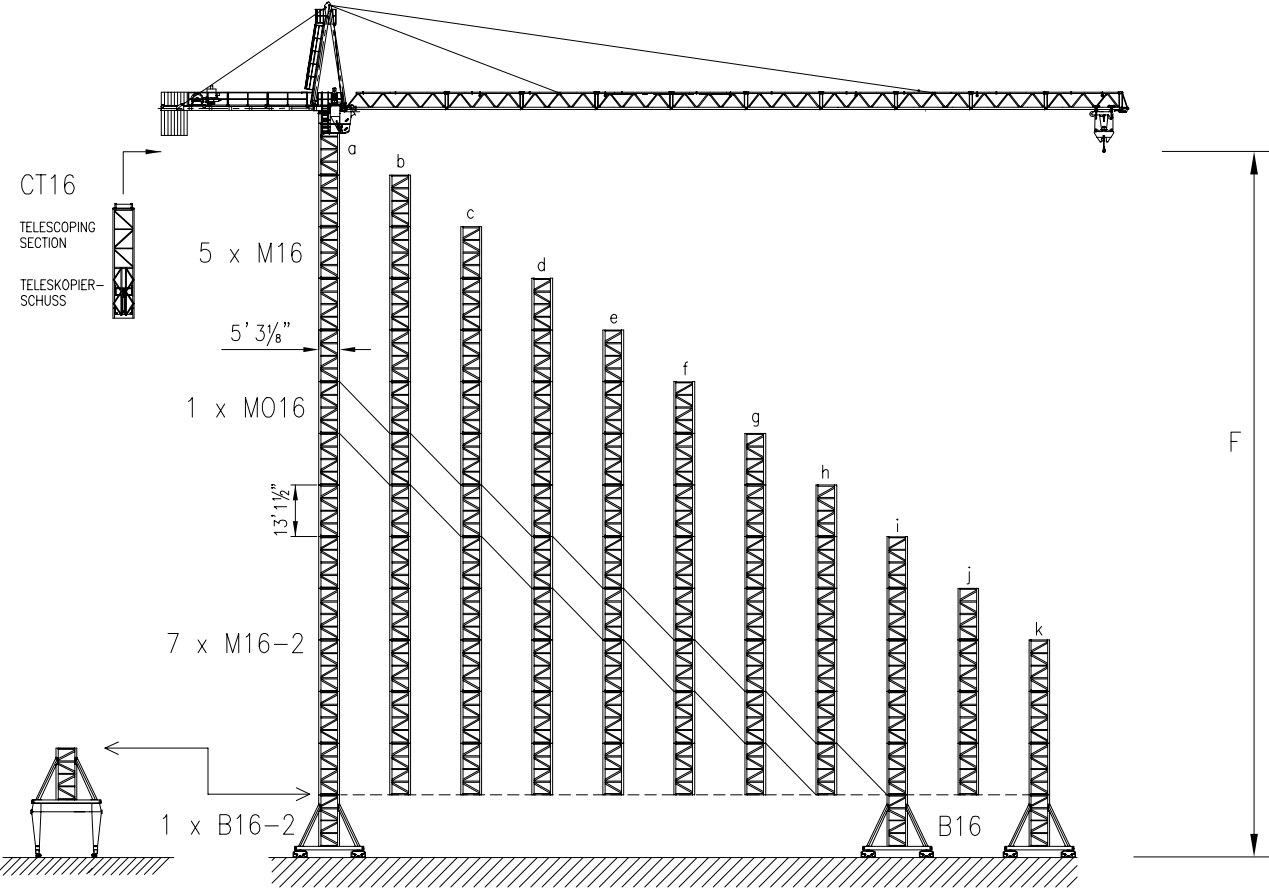
POS	ITEM	lbs
9	B16, 6m	4850
10	B16-2, 6m	8810
11	N16	1980
12	N16-2	3300
13	BASE PADS (4)	1960
14	CT16	12560
15		
16		

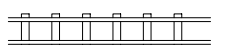


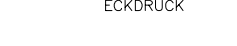
EXTRA EQUIPMENT AVAILABLE	
WALL TIE FRAMES, CABLE DRUMS, CURVE RUNNING AND 90° TURN BOGIES, ELEVATOR, FLOOD LIGHTING	
ZUSÄTZLICHE AUSRÜSTUNG VERFÜGBAR	
EINSpanNRAHMEN, KABELTROMMEL, KURVENFAHRENDE UND 90° DREHSCHEMEL, AUFZUG, SCHEINWERFER	

THE DESIGN AND TECHNICAL SPECIFICATIONS GIVEN ARE APPLICABLE TO THE STANDARD MACHINE OF CRANE K-160. MODIFICATIONS ACCORDING TO SPECIAL REQUIREMENTS REGARDING FOR EXAMPLE HOOK HEIGHT, JIB LENGTH, RAIL GAUGE, ETC.. ARE AVAILABLE. PLEASE CONTACT KRØLL CRANES A/S.	
DIE KONSTRUKTIONS- UND TECHNISCHE DATEN BEZIEHEN SICH AUF DIE STANDARD AUSFÜHRUNG DES KRANTYPS K-160. INDIVIDUELLE FORDERUNGEN Z.B. AN HAKENHÖHE, AUSLEGERLÄNGE, SPURWEITE USW. KÖNNEN BERÜCKSICHTIGT WERDEN. NEHMEN SIE MIT KRØLL CRANES A/S KONTAKT AUF.	

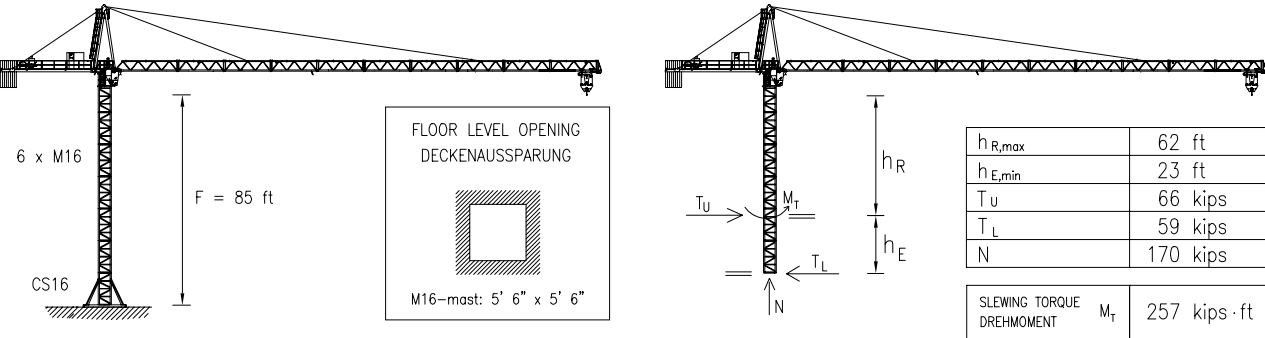
CONVERSION OF THE UNITS FOR FORCES UMRECHNUNG DER EINHEITEN FÜR KRÄFTE	1 kips = 1000 lbs	SUBJECT TO ALTERATIONS ÄNDERUNGEN VORBEHALTEN	F.E.M.	DATA SHEET DATABLATT	K-160 010401
---	-------------------	--	--------	-------------------------	-----------------

K-160 ON RAILS / AUF SCHIENEN



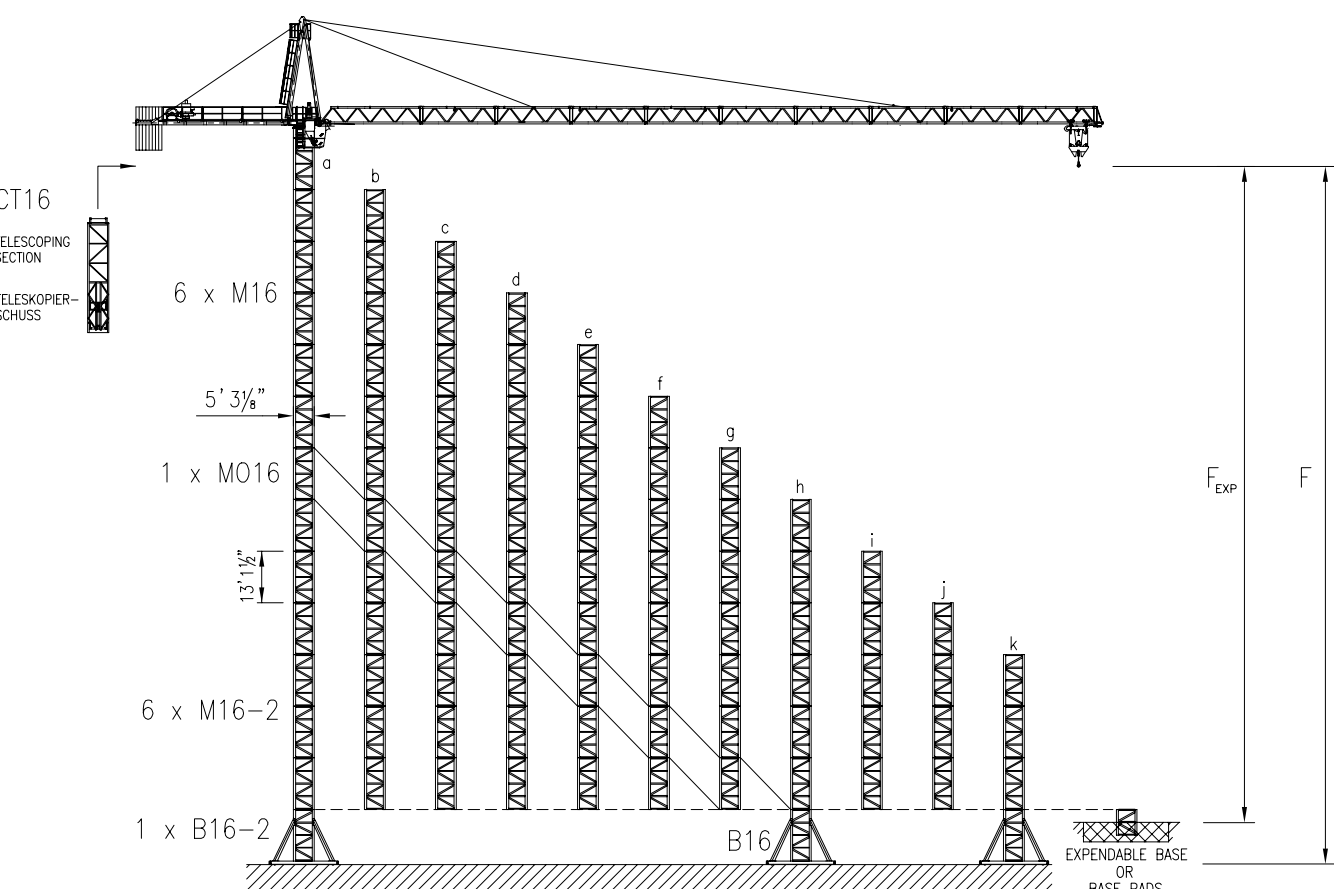
HOOK HEIGHT / HAKENHÖHE	F	ft	a	b	c	d	e	f	g	h	i	j	k
 RAIL GAUGE SPURWEITE	ft		19' 8 3/16"										
BALLAST	kips		216	152	137	124	111	100	91	84	80	71	66
 PARKING FOUNDATIONS PARKIERUNGSFUNDAMENTE	x4 kips		0	0	0	0	0	0	0	0	0	0	0
 IN SERVICE IM BETRIEB	kips		214	196	181	165	152	141	130	121	112	104	97
 OUT OF SERVICE AUSSER BETRIEB	kips		280	240	207	176	145	121	99	84	79	75	73

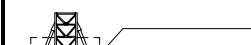

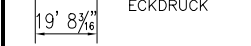

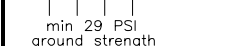
K-160 CLIMBER / KLETTERKRAN



$h_{R,max}$	62 ft
$h_{E,min}$	23 ft
T_u	66 kips
T_L	59 kips
N	170 kips
SLEWING TORQUE DREHMOMENT	M_r 257 kips · ft

K-160 STATIONARY / STATIONÄR



HOOK HEIGHT / HAKENHÖHE	F	ft	a	b	c	d	e	f	g	h	i	j	k
 BALLAST	kips		214	163	130	119	111	104	97	91	82	77	71
 IN SERVICE IM BETRIEB	kips		189	167	152	143	132	126	117	108	101	95	90
 OUT OF SERVICE AUSSER BETRIEB	kips		269	231	198	170	141	117	95	79	75	73	70
 B x B x H H=3' 4"	F	ft	177	164	151	138	125	112	98	85	72	59	46
	B	ft	26	25	24	23	23	23	23	23	23	23	23
	kips		322	291	260	253	253	253	253	253	253	253	253
 B x B x H H=4' 7"	F _{EXP}	ft	164	151	138	125	112	98	85	72	59	46	33
	B	ft	24	23	22	20	19	19	19	18	18	18	17
	kips		385	346	306	269	242	236	227	220	211	203	196

JIB CONFIGURATION

JIB LENGTH AUSLEGER-LÄNGE	INNER SECTION	HEAVY SECTION	HEAVY EYE SECTION	HEAVY SECTION	LIGHT SECTION	LIGHT EYE SECTION	LIGHT SECTION	INNER STAY INNERE ZUGSTANG						OUTER STAY ÄUSSERE ZUGSTANG						COUNTERWEIGHT GEGENGEWICHT		
								1900 mm	700 mm	3110 mm	6100 mm	5440 mm	1150 mm	1110 mm	2450 mm	6100 mm	5670 mm	5710 mm	1150 mm	6608 lbs	1100 lbs	TOTAL lbs
197 ft	1	1	1	1	3	1	2	1	1	1	1	1	1	1	1	4	1	2	1	8	0	52864
177 ft	1	1	1	1	3	1	1	1	1	1	1	1	1	1	1	4	1	2	1	7	0	46256
159 ft	1	1	1	1	3	1	0	1	1	1	1	1	1	1	1	4	1	2	1	7	0	46256
140 ft	1	1	1	1	2	1	0	1	1	1	1	1	1	1	1	4	1	1	1	6	0	39648
121 ft	1	1	1	1	1	1	0	1	1	1	1	1	1	1	1	4	1	0	1	5	1	34140
102 ft	1	0	1	2	0	1	0	1	1	1	1	0	1	1	1	4	0	0	1	4	3	29732

AUSLEGER KONFIGURATION