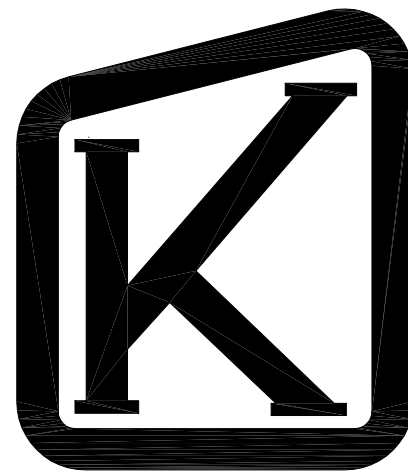


K-180



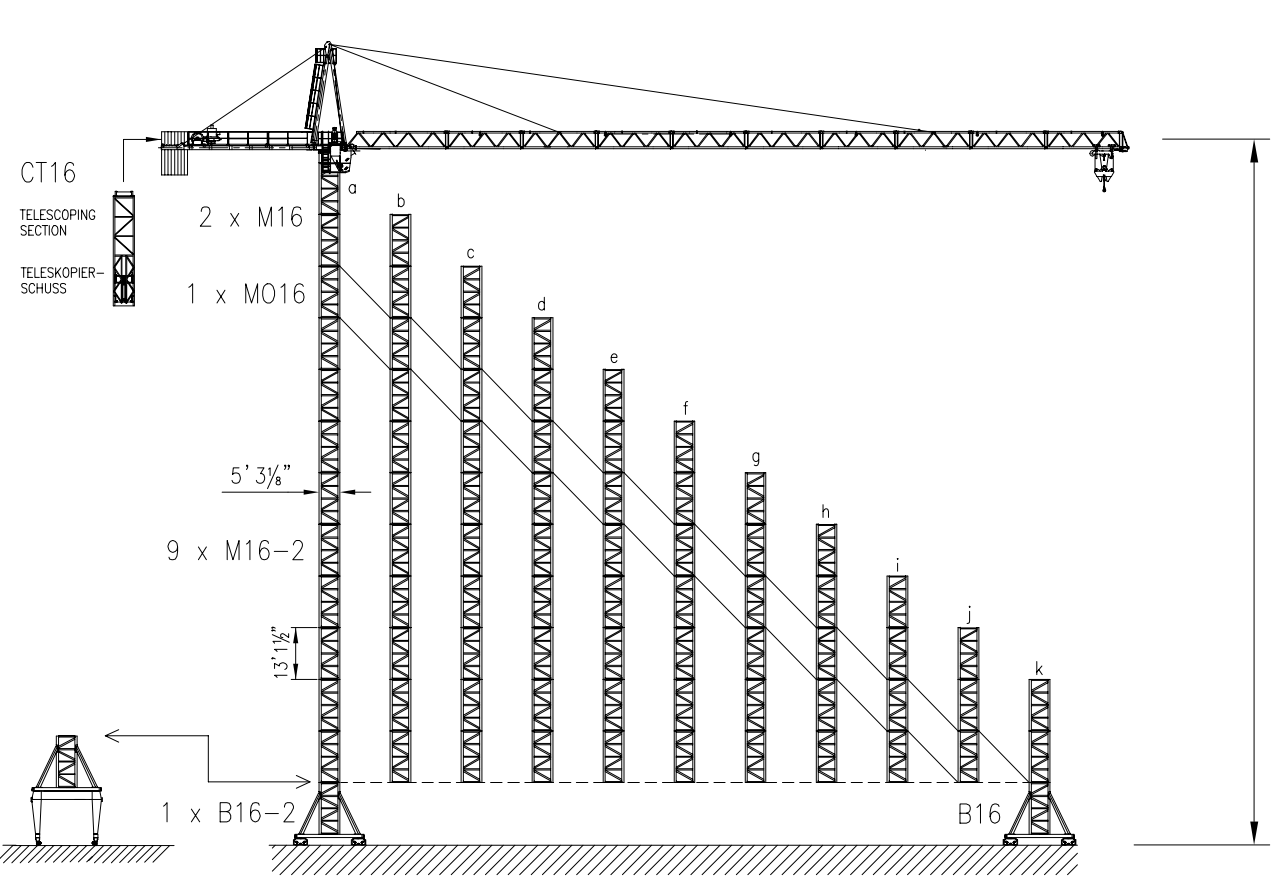
KRØLL CRANES A/S

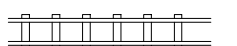
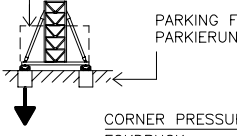
E-mail: krollcranes@krollcranes.dk · www.krollcranes.com

HOIST ROPE	ø15 mm	-	FILL FACTOR 0.65	-	1770 MPa	BREAKING STRESS
HUB-SEIL			44/66 kW			BRUCHSPANNUNG
			1650 ft			
			>1650 ft *			
TROLLEY ROPE	ø8 mm					
LAUFKATZE-SEIL						

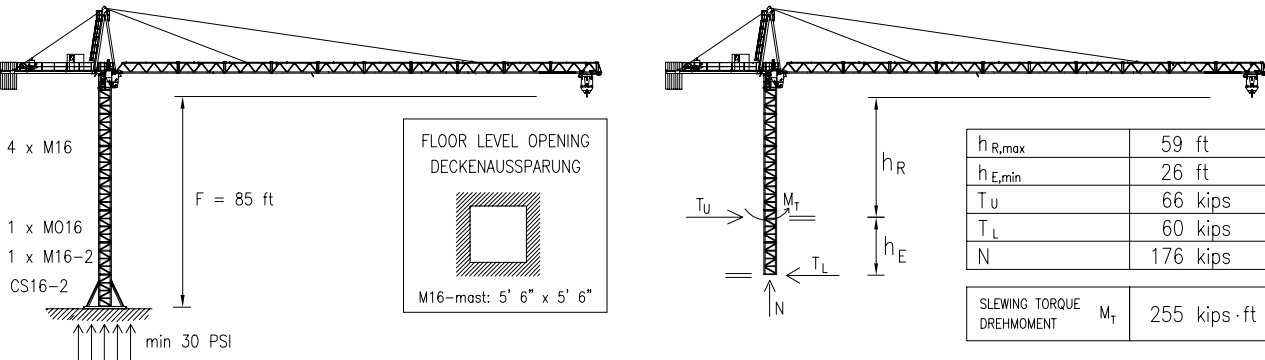
DATA SHEET	K-180
DATABLATT	010401

K-180 ON RAILS / AUF SCHIENEN

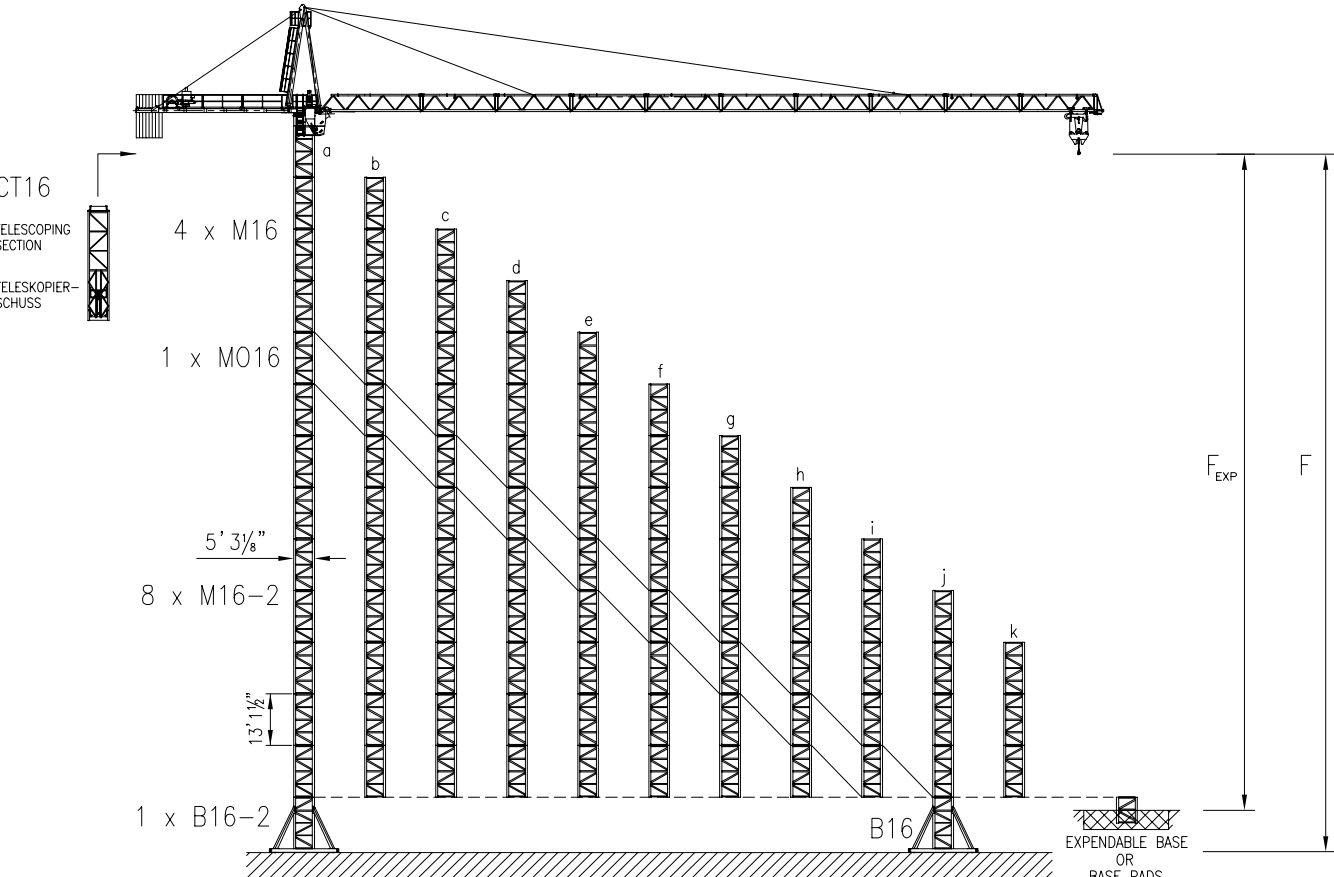


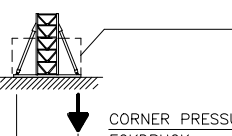
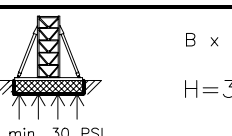
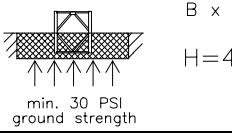
HOOK HEIGHT / HAKENHÖHE	F	ft	a	b	c	d	e	f	g	h	i	j	k
 RAIL GAUGE SPURWEITE	ft		167	154	141	128	114	101	88	75	62	49	36
 CORNER PRESSURE ECKDRUCK	ft		19' 8 3/16"										
BALLAST	kips		166	141	126	113	99	91	82	75	71	66	66
PARKING FOUNDATIONS PARKIERUNGSFUNDAMENTE	x4 kips		0	0	0	0	0	0	0	0	0	0	0
IN SERVICE IM BETRIEB	kips		214	199	183	170	157	146	137	128	119	113	106
OUT OF SERVICE AUSSER BETRIEB	kips		247	212	181	152	121	99	86	80	77	73	73

K-180 CLIMBER / KLETTERKRAN


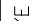


K-180 STATIONARY / STATIONÄR



HOOK HEIGHT / HAKENHÖHE	F	ft	a	b	c	d	e	f	g	h	i	j	k
 BALLAST	kips		212	161	130	119	108	102	95	88	84	82	77
IN SERVICE IM BETRIEB	kips		196	183	168	159	150	141	132	126	119	113	106
OUT OF SERVICE AUSSER BETRIEB	kips		271	234	201	170	141	117	95	80	77	75	73
 B x B x H H=3' 4"	F	ft	177	164	151	137	124	111	98	85	72	59	46
FOUNDATION WEIGHT FUNDAMENTSGEWICHT	B	ft	26	25	24	23	23	23	23	23	23	23	23
min. 30 PSI ground strength	kips		322	291	260	254	254	254	254	254	254	254	254
 B x B x H H=4' 7"	F _{EXP}	ft	164	151	137	124	111	98	85	72	59	46	32
FOUNDATION WEIGHT FUNDAMENTSGEWICHT	B	ft	24	23	22	22	20	20	20	19	19	19	19
min. 30 PSI ground strength	kips		386	346	306	306	269	260	251	243	236	236	227

JIB CONFIGURATION

JIB LENGTH AUSLEGER- LÄNGE	INNER SECTION	HEAVY SECTION	HEAVY EYE SECTION	HEAVY SECTION	LIGHT SECTION	LIGHT EYE SECTION	LIGHT SECTION	INNER STAY INNERE ZUGSTANG						OUTER STAY ÄUSSERE ZUGSTANG						COUNTERWEIGHT GEGENGEWICHT			
								1900 mm	700 mm	3110 mm	6100 mm	5440 mm	1150 mm	1110 mm	2450 mm	6100 mm	5670 mm	5710 mm	1150 mm	 6608 lbs	 1100 lbs	TOTAL lbs	
197 ft	1	1	1	1	3	1	2	1	1	1	1	1	1	1	1	1	4	1	2	1	8	0	52864
177 ft	1	1	1	1	3	1	1	1	1	1	1	1	1	1	1	1	4	1	2	1	7	0	46256
159 ft	1	1	1	1	3	1	0	1	1	1	1	1	1	1	1	1	4	1	2	1	7	0	46256
140 ft	1	1	1	1	2	1	0	1	1	1	1	1	1	1	1	1	4	1	1	1	6	0	39648
121 ft	1	1	1	1	1	1	0	1	1	1	1	1	1	1	1	1	4	1	0	1	5	1	34140
102 ft	1	0	1	2	0	1	0	1	1	1	1	0	1	1	1	1	4	0	0	1	4	3	29732

AUSLEGER KONFIGURATION